

TECTRAC® SK

An American structure classic



WHY TECTRAC® SK?

- Simple to install
- Flexible installation (tilt-up or lift-up) design
- Interchangeable parts between sizes
- Modern curved beam style
- Measured in feet and not meters

PRODUCT OVERVIEW

The Tectrac® SK Structure is a revolutionary clearspan design built for the tent rental industry. This user-friendly and easy-to-assemble structure is economical and provides an excellent return on investment. The Tectrac® structure system is an innovative clearspan that allows for installation in either a tilt-up or lift-up technique.

The Tectrac® fabric tops and walls slide into channels within the extruded aluminum beam resulting in superior performance and longevity. The smart beam design accommodates interchangeability of the

straight beam components to vary both the width and length of the structure.

Passionately created by the world's best tent craftsmen, Aztec's Tectrac® structure system will provide optimal temporary event space while ensuring that the elements stay outside. Commercial grade toughness means Aztec's Tectrac® structure systems will withstand the test of time.

ENGINEERING

System engineered to ASCE 7-10 76-MPH (3-Second Gust) Exposure "C".

ONLINE PRODUCT INFORMATION



See our website for additional images and information on the Tectrac® SK structure system.

CALL US TODAY 800.228.3687 · AZTECTENTS.COM

AZTEC TENTS
DESIGN & PRODUCTION

THE AZTEC ADVANTAGE

HANDCRAFTED STRUCTURES FOR EXCEPTIONAL PERFORMANCE

SPECIFICATIONS

Widths:
10', 15', 20', 30', 40', and 50'

Lengths:
Expandable 10', 15' and 20' mids

Fabric:
17oz PVC laminated blockout white standard membrane. Transparent clear and other colors are available. All material treated for mildew resistance and UV degradation

Hardware:
6061-T6 Anodized Aluminum frame system with zinc plated steel connectors

Flame Retardancy:
NFPA 701, CA State Fire Marshal Title 19, CAN ULC S109-03

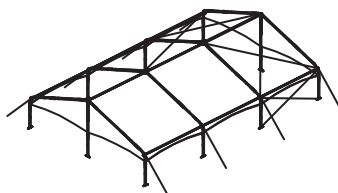
Engineering:
IBC 2013, ASCE 7-10

Common Accessories:
Sidewalls, fabric liners, rain gutters, doors and repair kits

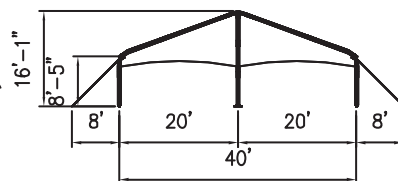


1. Expansive interiors 2. Use transparent/clear tops for amazing evening events 3. Durable frame connections 4. Purlins are able to be installed from the ground 5. Hex end kits are available for 30' and 40' widths 6. Add corporate logos or graphics to gable panels for corporate events

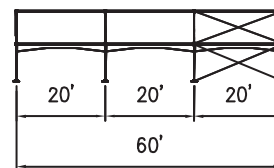
CONFIGURATIONS



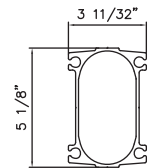
ISOMETRIC VIEW



END VIEW



SIDE VIEW



CALL US TODAY 800.228.3687 · AZTECTENTS.COM

AZTEC TENTS
DESIGN & PRODUCTION